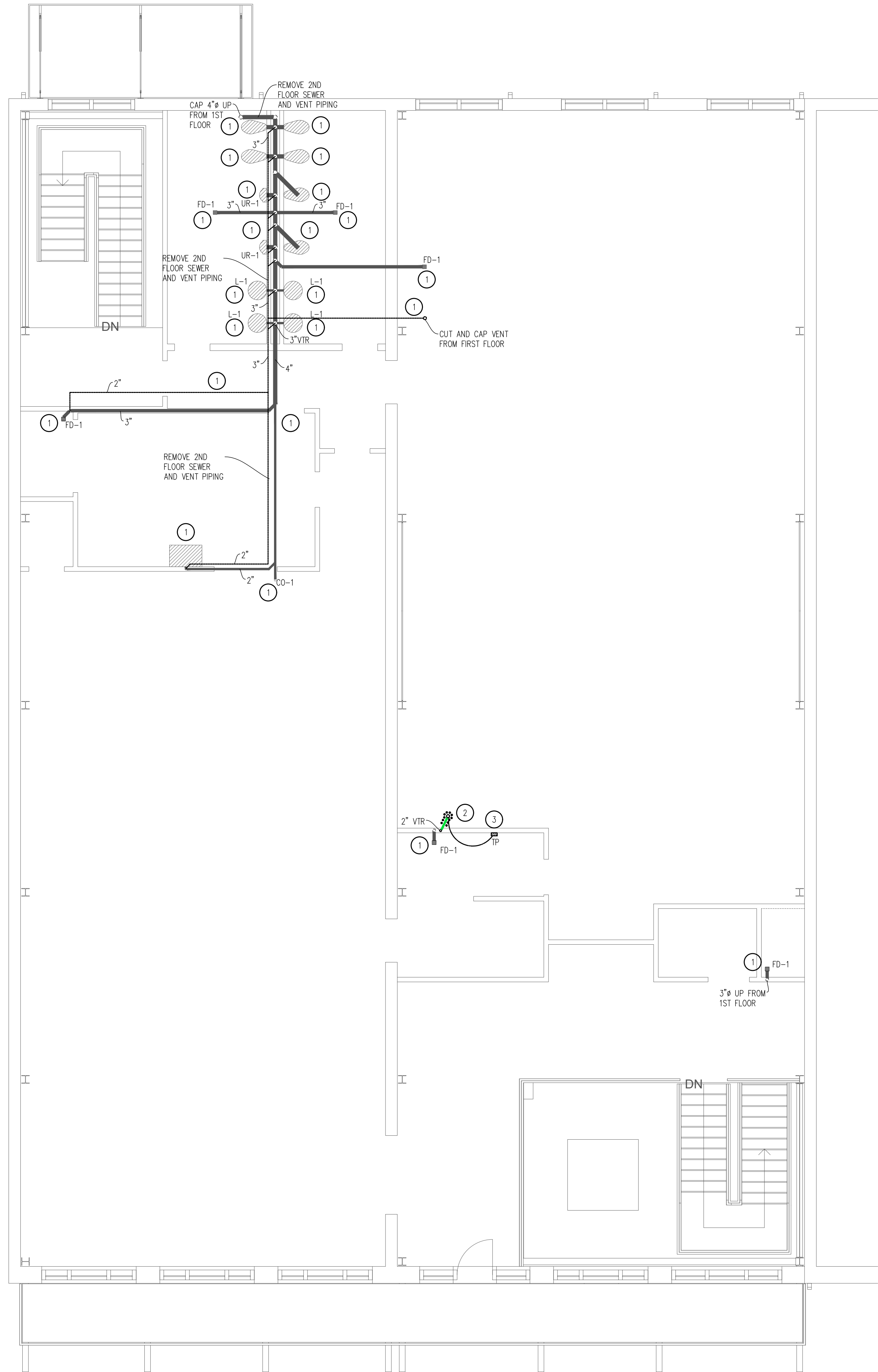


01

SECOND FLOOR SANITARY SEWER PLAN

SCALE: 3/16"=1'-0"



GENERAL PLUMBING PLAN NOTES

- ALL WORK SHALL COMPLY WITH LOCAL STATE AND FEDERAL CODES TO SATISFACTION OF CODE AUTHORITIES HAVING JURISDICTION.
- REFER TO ARCHITECTURAL DRAWINGS FOR PHASING, FLOOR FINISHES, AND WALL FINISHES.
- FURNISH AND INSTALL ALL EQUIPMENT/ PLUMBING FIXTURES AS INDICATED BY THIS DRAWING. CONTRACTOR SHALL MAKE ALL FINAL CONNECTIONS AS REQUIRED.
- CONTRACTOR SHALL VERIFY THE EXISTING INVERTS OF ALL EXISTING SERVICES IN FIELD TO ASSURE THAT ALL PIPING IS RUN AT THE PROPER SLOPE. INCLUDE THIS TIME IN LABOR AND MATERIALS.
- COORDINATE ALL PLUMBING WITH OTHER TRADES. DUCTWORK, AND SPRINKLER ROUTING TAKES PRECEDENCE OVER PLUMBING. MAKE OFFSETS AS REQUIRED. INCLUDE ALL OFFSETS IN YOUR LABOR AND MATERIALS PRICE.
- CONTRACTOR SHALL COORDINATE SPACE REQUIREMENTS AND SERVICE CLEARANCES FOR ALL EQUIPMENT PRIOR TO SUBMITTING SHOP DRAWINGS.
- ALL SANITARY SEWER AND VENT PIPING SHALL BE NO HUB CAST IRON ABOVE SLAB, BELOW SLAB SHALL BE SCH 40 DWV PVC.
- VERIFY CONNECTION POINT OF ALL TRADES. INCLUDE THIS TIME IN LABOR AND MATERIALS TO DO THIS IN THE BID.

NOTE:

- REFER TO SHEET P3 FOR SANITARY SEWER VENT ROUTING.
- THESE PLANS ARE DIAGRAMMATICAL AND ARE INTENDED TO BE USED BY CONTRACTOR WELL VERSED IN READING BIDDING DOCUMENTS, NECESSARY VERTICAL PIPING IS NOT SHOWN. CONTRACTOR SHALL FURNISH AND SUBMIT PLUMBING AND SEWER COORDINATION DRAWINGS SHOWING OFFSETS, VERTICAL PIPING, SUPPORT ETC/ COORDINATION WITH THE BUILDING STRUCTURE AND ALL OTHER TRADES.

SANITARY SEWER KEYNOTES

- REMOVE SECOND FLOOR SEWER AND VENT PIPING.
- FURNISH AND INSTALL 2" INSULATED P-TRAP WITH TRAP PRIMER ABOVE CEILING WITH 3" OPEN HUB DRAIN, FULLY INSULATED.
- TRAP PRIMER ABOVE CEILING WITH FULLY INSULATED RUN TO HUB DRAIN.

SANITARY SEWER LEGEND

SYMBOL	DESCRIPTION	SYMBOL	DESCRIPTION
-----	EXISTING SANITARY SEWER LINE	SS	SERVICE SINK
=====	SANITARY SEWER LINE	L	LAVATORY
-----	EXISTING SEWER VENT PIPE	SK	SINK
-----	SEWER VENT PIPE	WC	WATER CLOSET
-----	TRAP PRIMER	FD	FLOOR DRAIN
EWG	ELECTRIC WATER COOLER	WCO	WALL CLEAN OUT
ECO	EXTERIOR CLEAN OUT	VTR	VENT THROUGH ROOF
CO	CLEANOUT	UR	URINAL
TP	TRAP PRIMER		



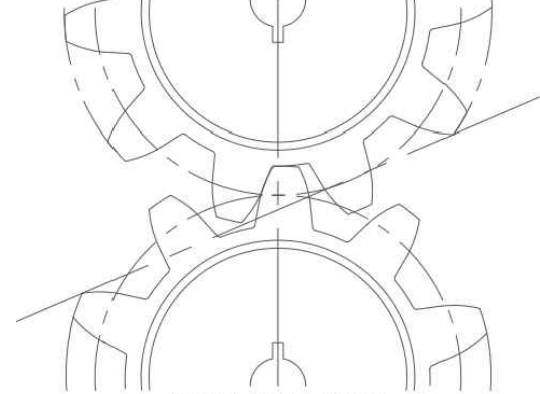
Job Title:

Office of the State  
Public Defender  
District 8  
Office Building

111 West Main Street  
Winnfield, LA 71483

CDMorgan

& ASSOCIATES, INC.  
ENGINEERING CONSULTANTS  
A PROFESSIONAL ENGINEERING AND ARCHITECTURAL  
CORPORATION  
LOUISIANA



(337) 886-1280  
www.CDMorgan.com



Seal:

May 15, 2026

Construction Documents

No.	Description	Date

KEY PLAN

SECOND FLOOR  
SANITARY SEWER PLAN

Project No.: BL0001-25

Drawn By: TWN

P2

OSPD

Sheet No.: